



e-Storm

e-Storm is an excellent software that enables you to **send personalized mails** in plain Text or HTML format at lightning speed with a single mouse click by-passing your ISP's SMTP...



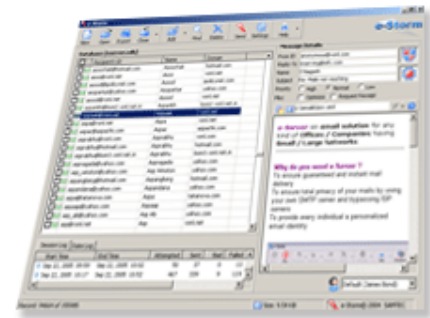
OVERVIEW:

e-Storm puts the world of e-mail marketing on your desktop. Whether you want to send bulk-mails or regular mails, manages your contact list, **e-Storm** provides a single point solution to all your mailing needs.

e-Storm is a unique multi-threaded Software that provides an extremely efficient and simplified mailing system. **e-Storm** is a comprehensive e-mail solution for any kind of offices / companies having small / large mailing needs.

e-Storm's built-in SMTP feature allows you to send messages straight out to the recipient's mail box without using any external SMTP. It provides real time monitoring of SMTP statistics, total active connections, messages sent, message failures due to various reasons like user unknown, mailbox full, etc.

In short **e-Storm** ensures faster, stable, secure and more easy-to-control mail sending and thus it helps to save your time and money.



Whether you want to send bulk-mails or regular mails, manages your contact list,

e-Storm provides a single point solution to all your mailing needs.



ADVANTAGES:

- ? To send out personalized business letters, proposals, product literatures, marketing mails, account statements, billing details, etc. on regular basis with minimum efforts
- ? To ensure guaranteed and instant mail delivery
- ? To ensure total privacy of your mails by using your own SMTP server and bypassing ISP server

e-Storm has many options like Personalized Mailing Feature, Spam Shield, Turbo Range, etc. to meet individual mailing needs.



FEATURES:

- ? Multi-threaded direct delivery from your computer into the recipient's mailbox, without using any external SMTP, which works several times quicker than usual e-mail client
- ? Minimizes returned mails by filtering out invalid / wrong e-mail ids before sending messages
- ? States the exact reason for the failed messages such as wrong user id, mailbox full, etc.
- ? Powerful backend database, which can handle millions of e-mail, addresses in one go
- ? Maintains complete session-wise history
- ? Import e-mail addresses / recipients list virtually from any files (.TXT, .CSV, .MDB, .DBF, etc.)
- ? Export sent / failed / bad e-mail addresses to .CSV files
- ? Utility to schedule delivery of outgoing mails by specifying date and time
- ? Removes duplicate and objectionable e-mail addresses
- ? Highly intuitive (GUI) Graphic User Interface
- ? Embedded A.I (Artificial Intelligence) technology
- ? Dynamic allocation of threads at runtime
- ? Optional Modules like
 - ? **Spam Shield** to protect sender e-mail id
 - ? **Server Simulation Mode** for dynamic mailing
 - ? **Personalized Mails** to attract recipient's attention
 - ? **Turbo Speed** to maximize internet utilization
 - ? **Power Templates** (more than 1200) to generate professional mails instantly